

Flash Christmas tree production process

Style: CTR-30C (Colorful light)

Working Voltage: DC4.5—5V

Finished Size: 60mm *60mm *136mm

The flash Christmas tree kit consists of a combination of three circuit boards, the user diy welding assembly, so that 36 LED alternating flashing, showing a three-dimensional shape of the Christmas tree (night environment to see better)

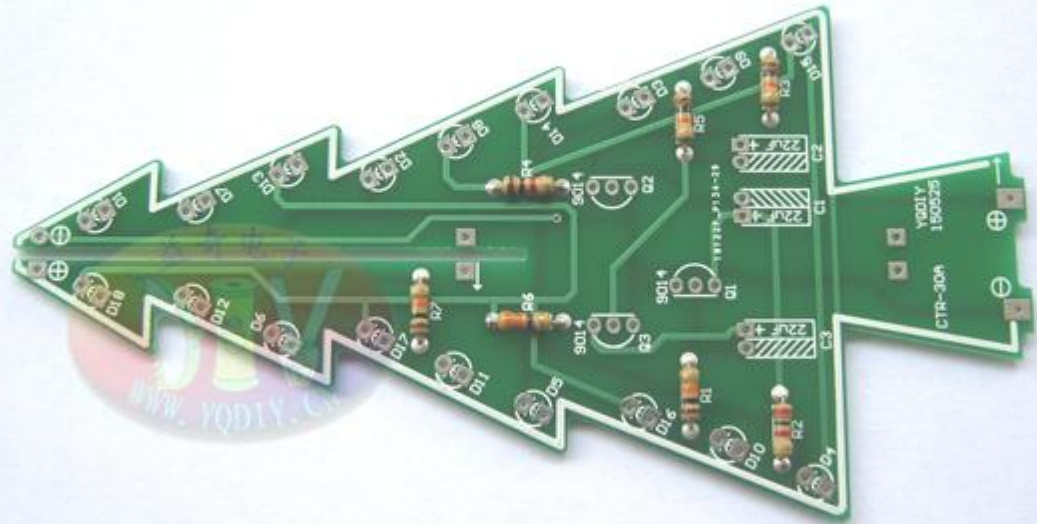
DIY Steps: 1.Solder CTR-30A circuit board (A Board)

-1.Solder 4 Resistor (R1 R3 R5 R7)



-2. Solder 3 Resistor (R2 R4 R6)

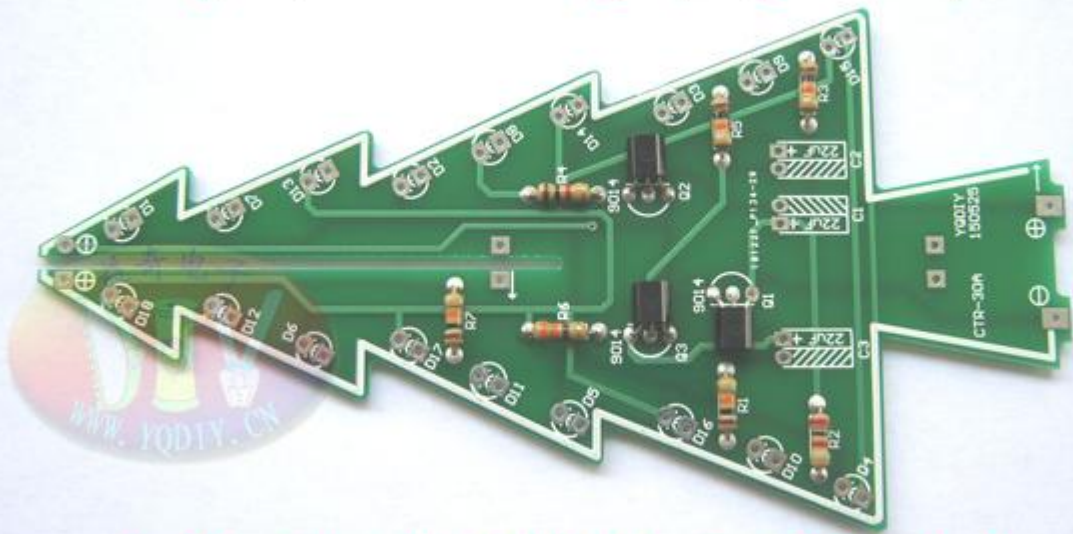
焊接3只电阻 (R2 R4 R6)



按照说明书上CTR-30A元件编号焊接

-3.Welding 3 transistor, using horizontal installation
(follow direction)

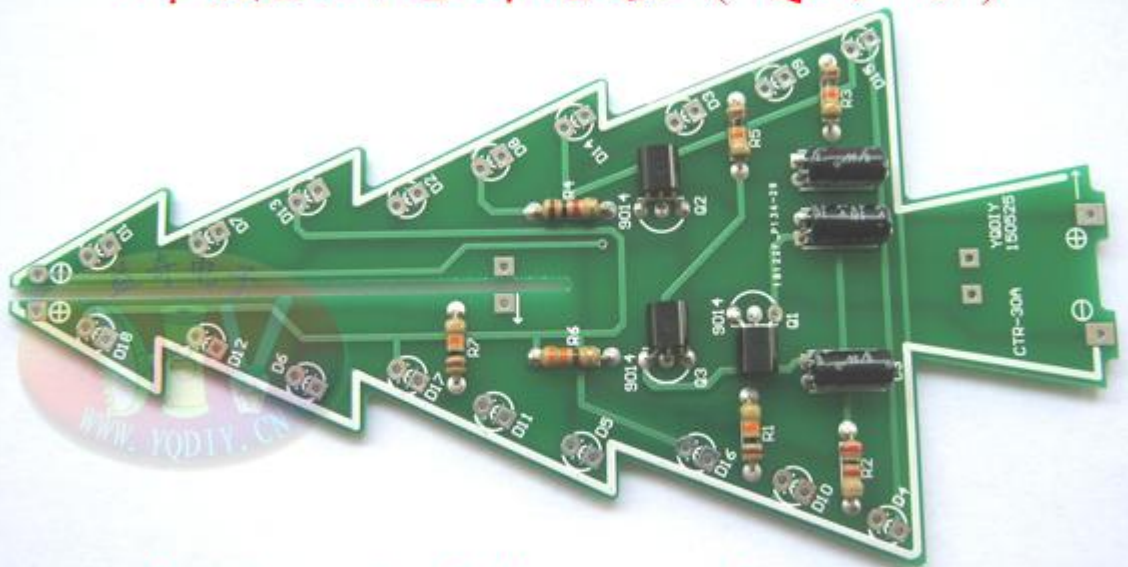
焊接3只三极管（有方向）



先将三极管引脚按正确的方向
作90度弯折，然后再焊接。

-4. Welding 3 electrolytic capacitors, using horizontal installation (Follow direction)

焊接3只电解电容（有方向）

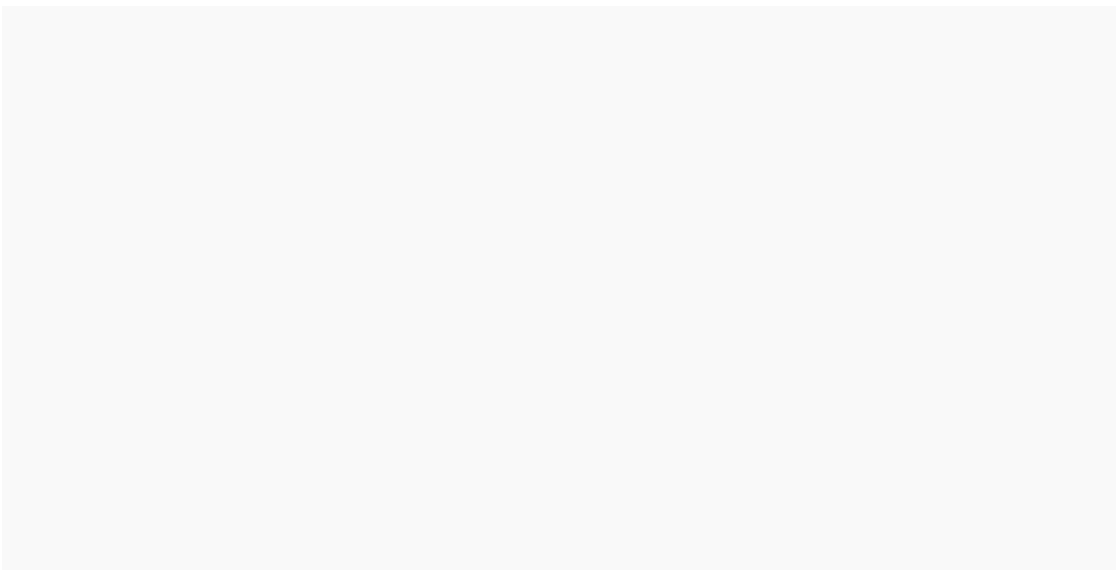
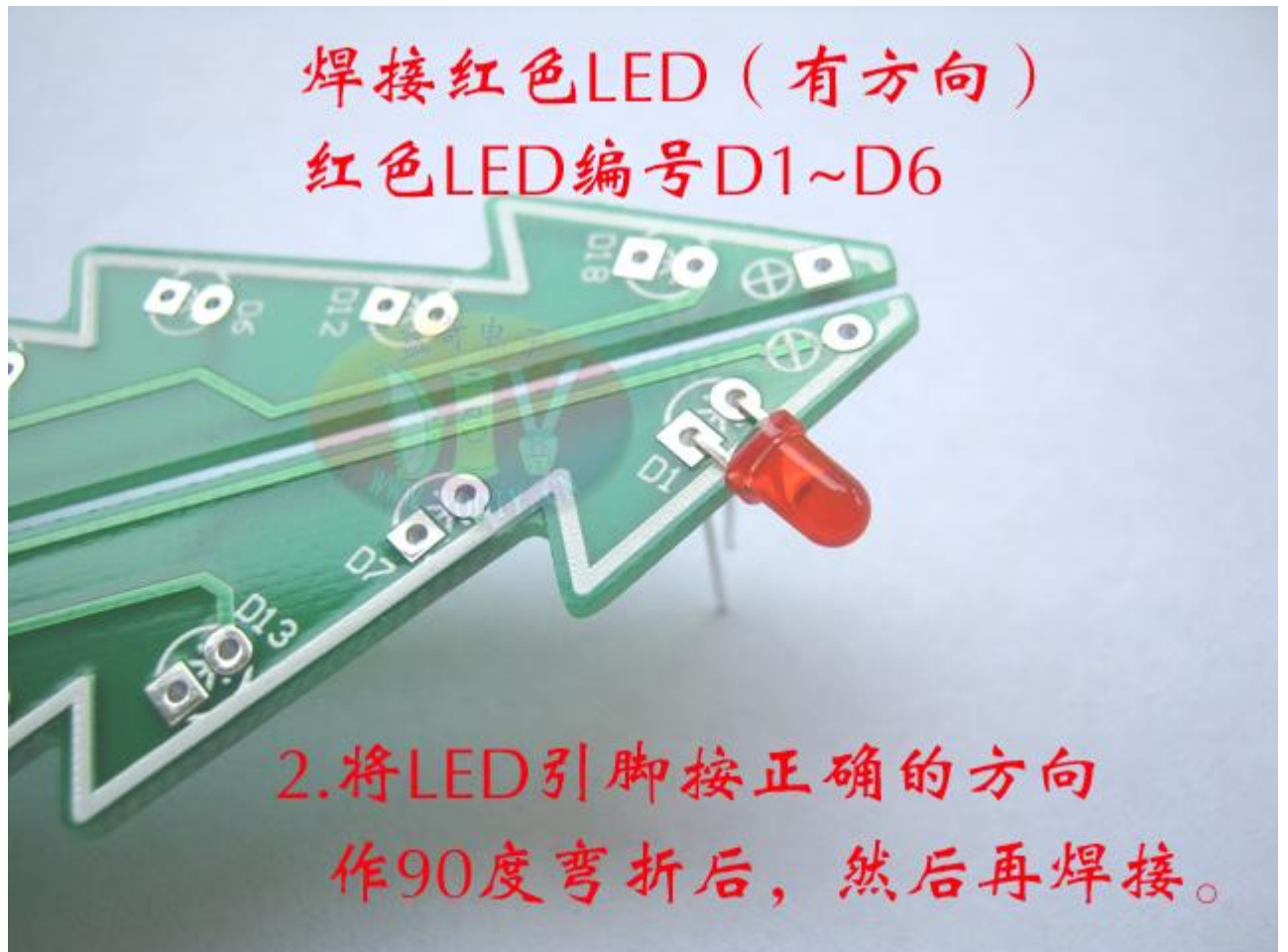


先将电容引脚按正确的方向作90度弯折，然后再焊接。

-5. Welding red LED (in the direction), red LED number D1~D6.

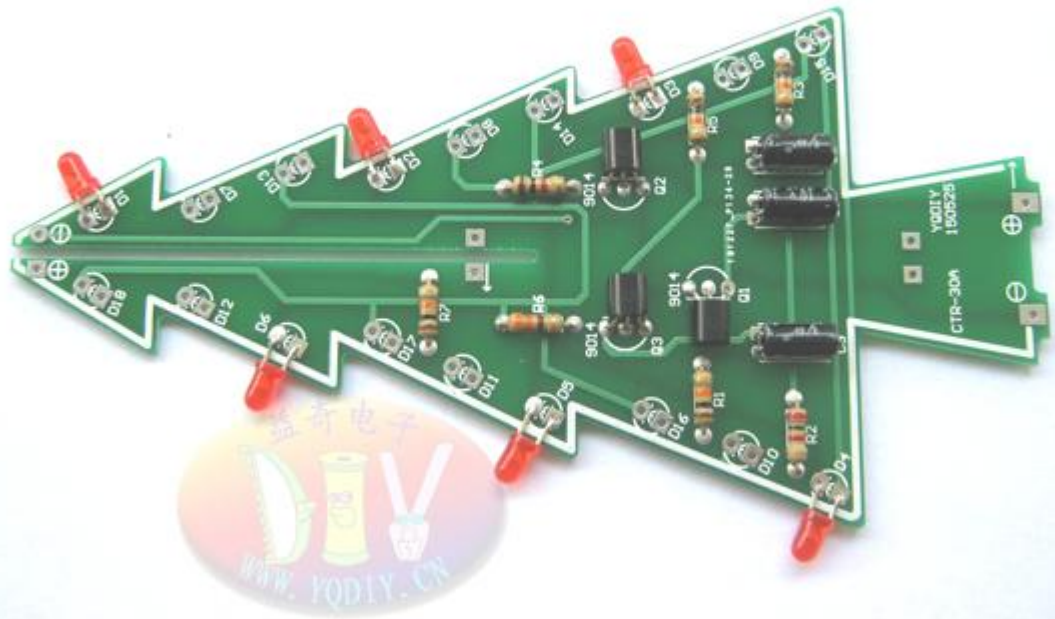


-6. insert to the corresponding hole bit (note the installation direction).



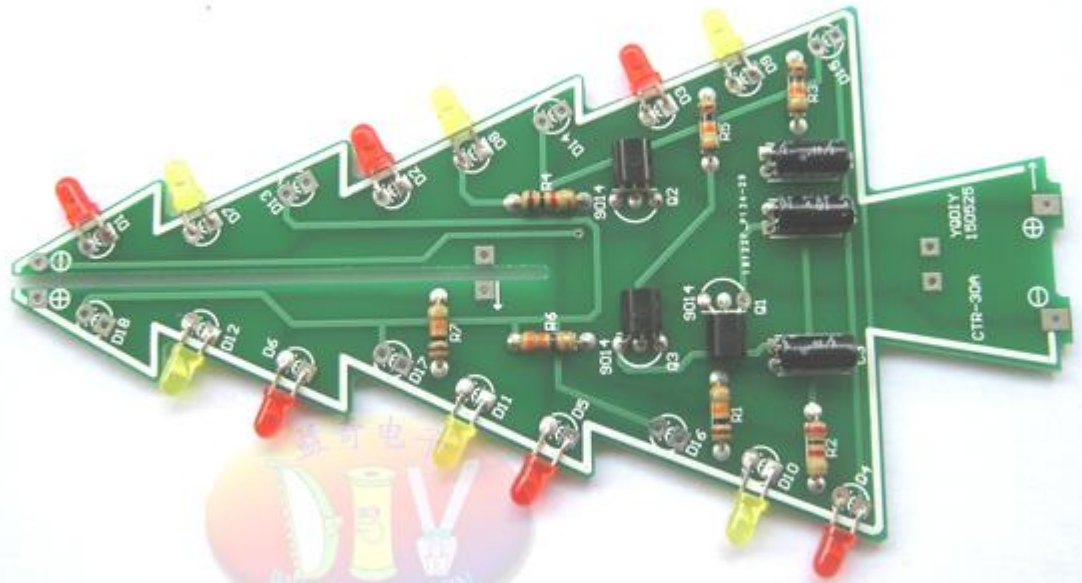
-7. Red LED welding (No. D1~D6)

红色LED焊接完毕 (编号D1~D6)



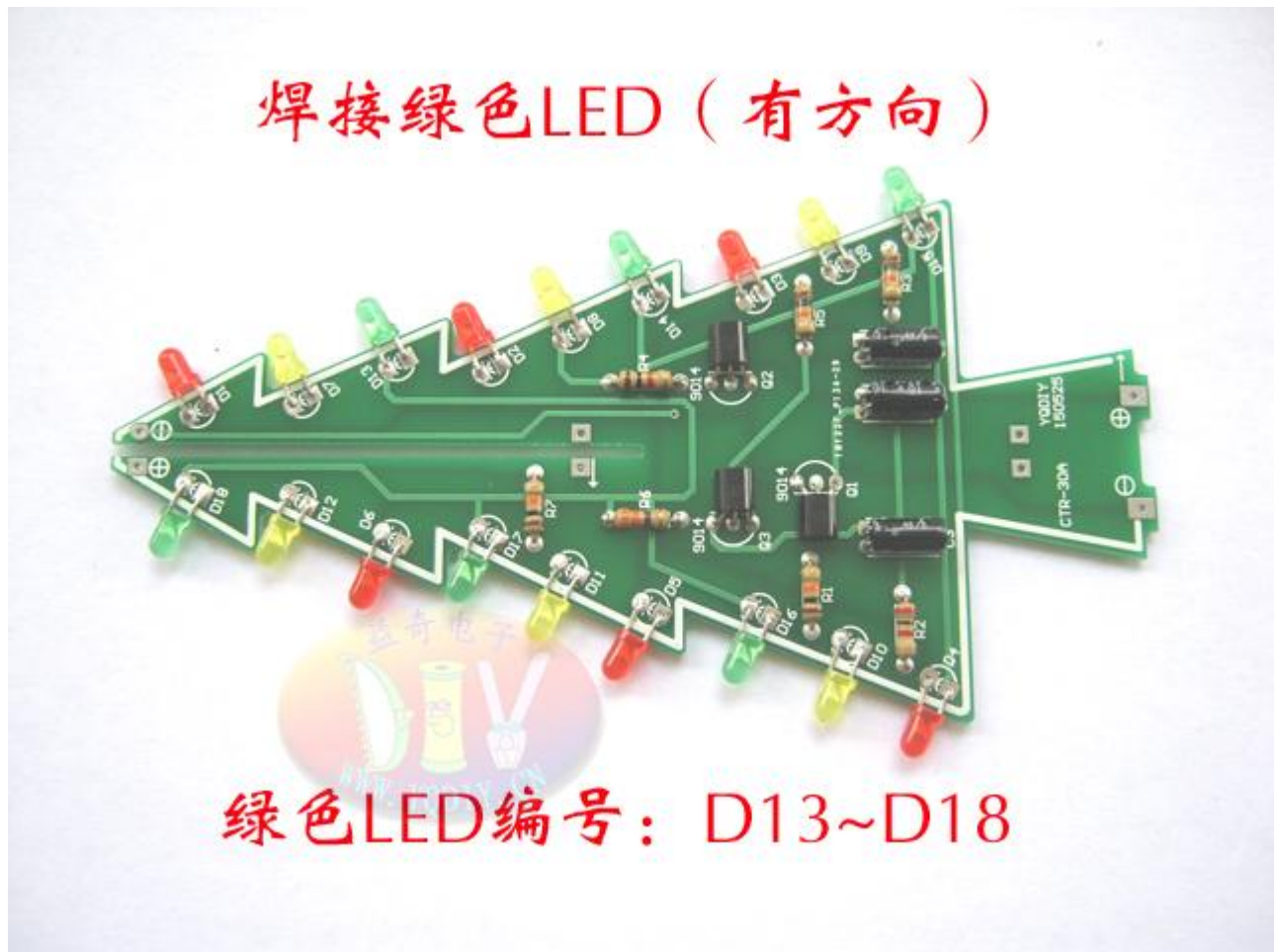
-8. Yellow LED welding (follow direction), number D7~D12

焊接黄色LED (有方向)

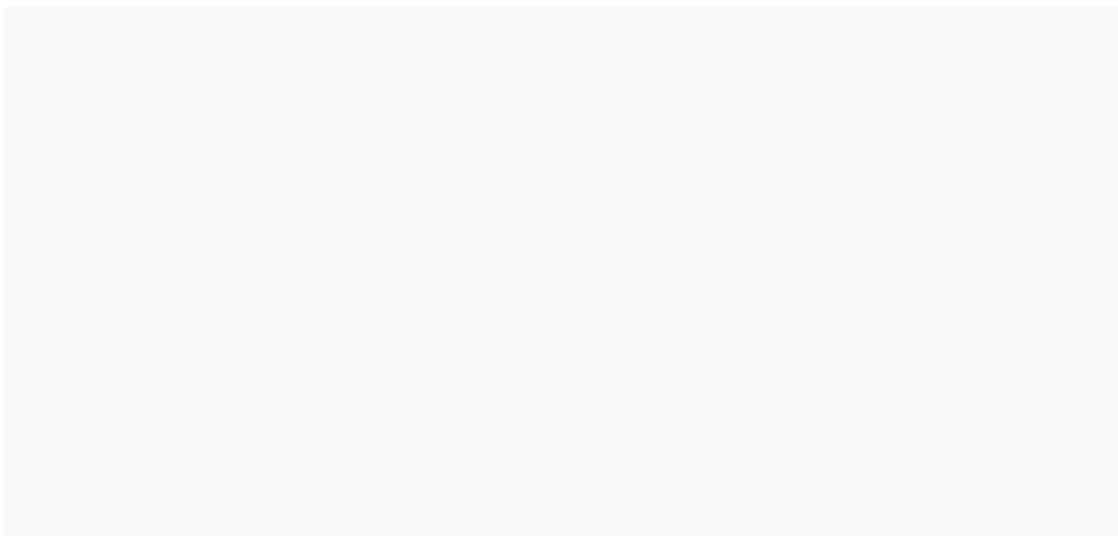


黄色LED编号: D7~D12

-9. Green LED welding (follow direction), number D13~D18



A board welding is finished.

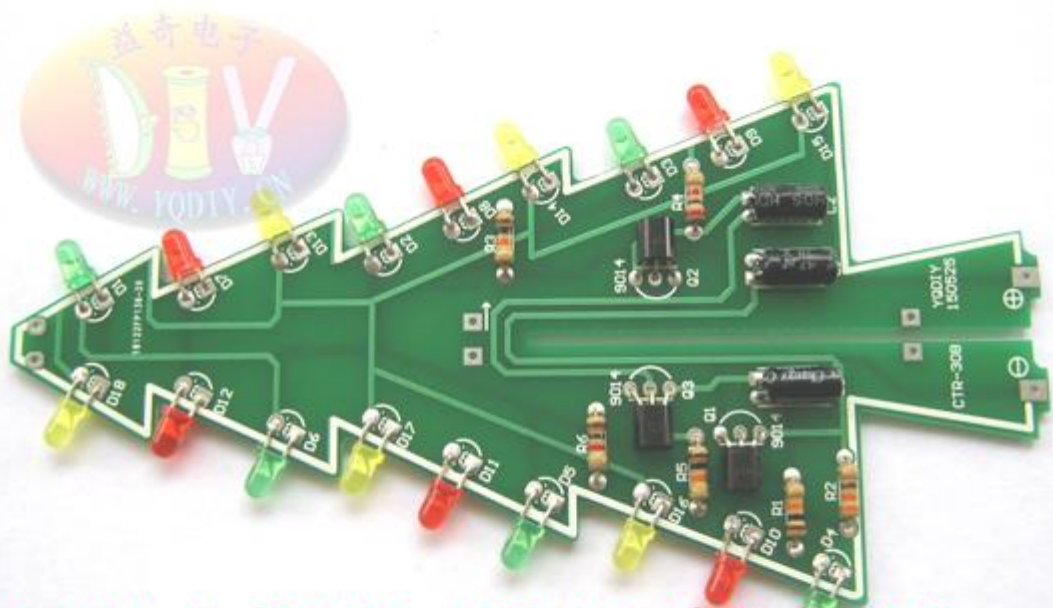


Next to the same direction of the CTR-30B circuit board, referred to as B board.

A board and B board have two kinds of components of the installation location is different; (according to the location of the installation can be installed on the list)

1. R2 R4 R6 resistance installation position is different
2. red green yellow LED installation location is different

用同样的方法焊接CTR-30B电路板



CTR-30A板与CTR-30B板元件位置区别:

1. R2 R4 R6电阻安装位置不同
2. 红黄绿LED安装位置不同

10. After the A board and B board are welded, the two plates can be energized to test whether the normal light emitting or not.

A.B board can be flash normally then to continue the following steps.

A板和B板焊接完成之后，分别接入4.5V左右电压，确认所有的LED能正常闪烁后，再继续后面的步骤。



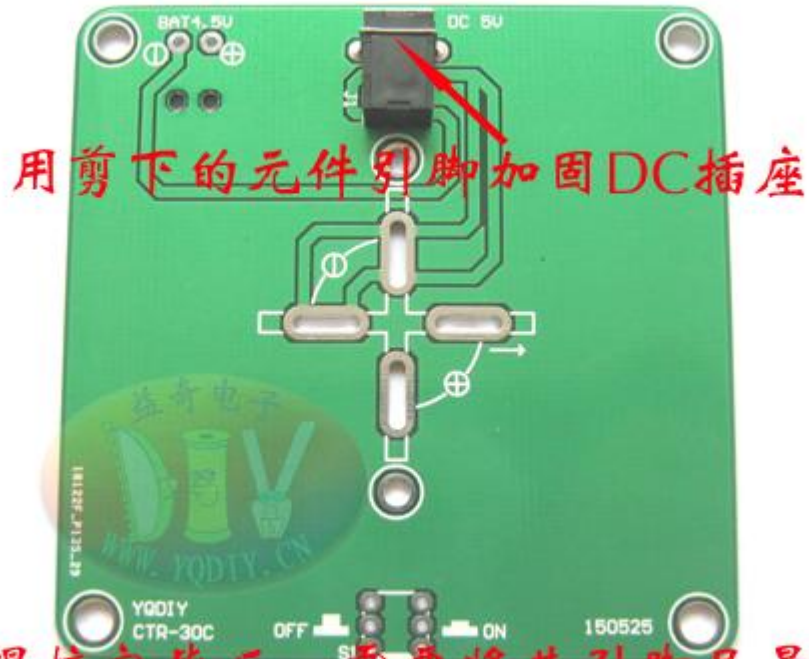
CTR-30A板

CTR-30B板

11. Solder CTR-30C circuit board, referred to as C board

Weld 1 DC socket (follow direction)

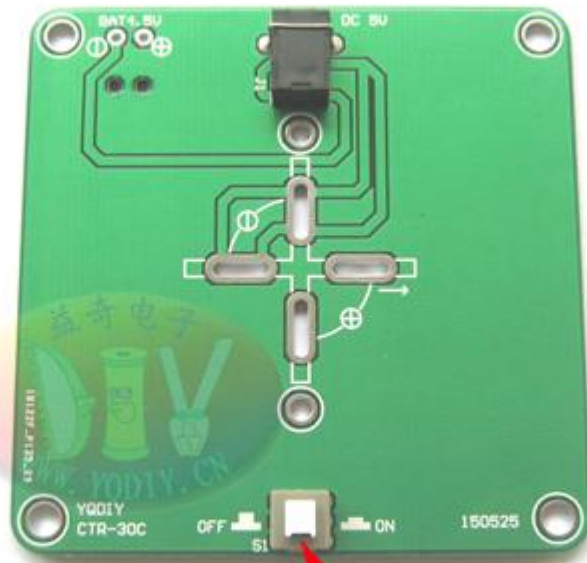
焊接1只DC插座（有方向）



DC插座焊接完毕后，需要将其引脚尽量剪短，防止影响后面电池盒的安装。

12. Welding 1 key switch (follow direction)

焊接1只按键开关（有方向）

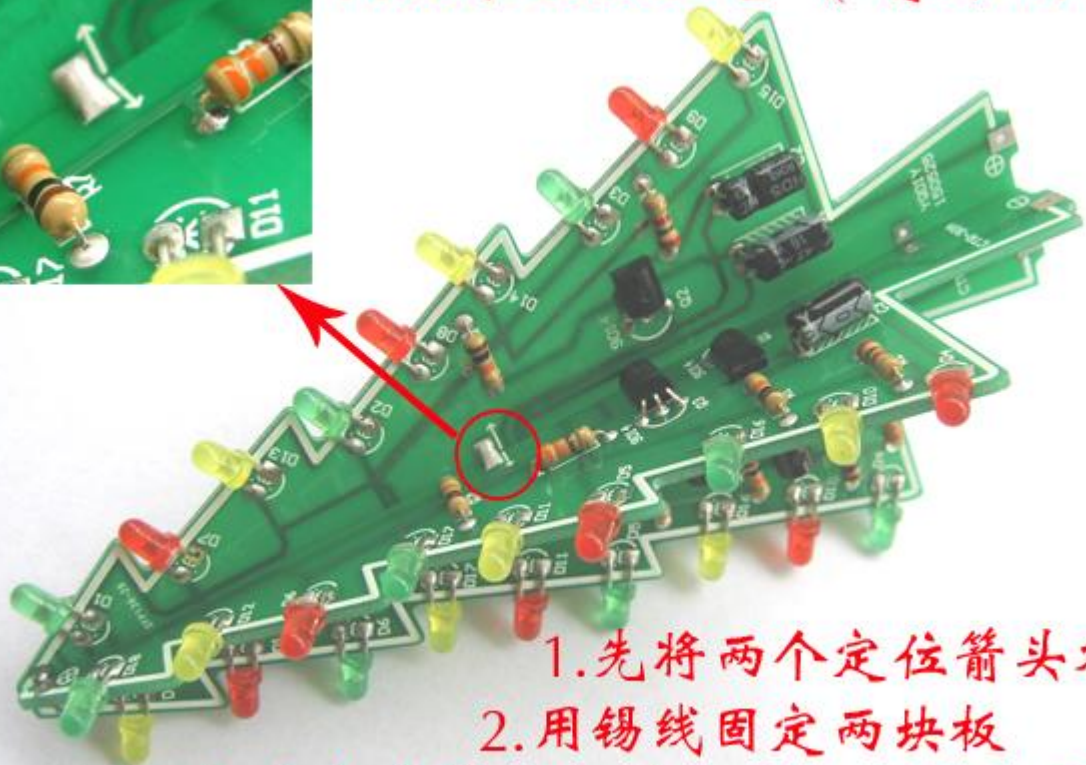


开关缺口向外

13. A and B board combination (follow direction, two plate positioning arrow as shown below, fix two board together with a soldering iron).



A板和B板组合（有方向）

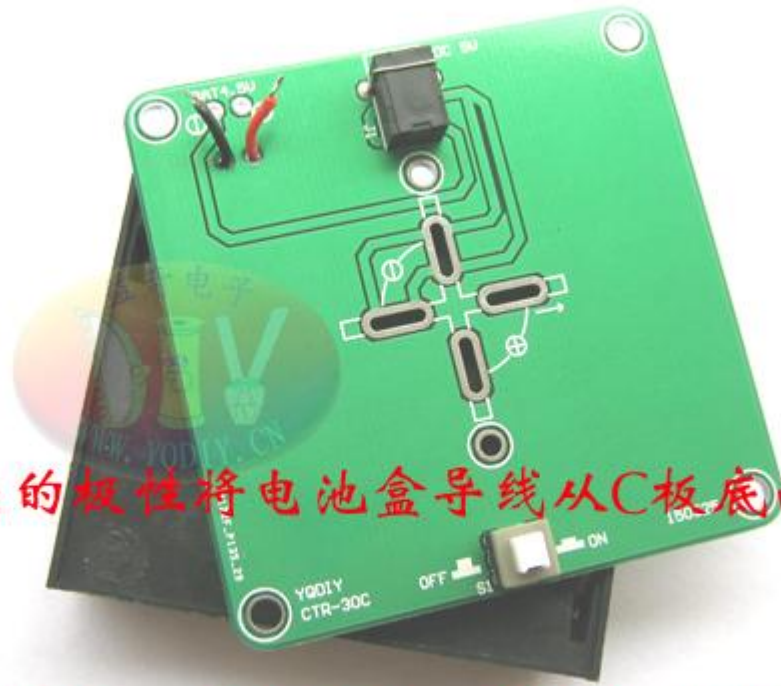


1. 先将两个定位箭头对齐
2. 用锡线固定两块板

A和B板的定位箭头如左上放大的图片所示

14. Combine Battery box and C board

电池盒与C板组合



1.按对应的极性将电池盒导线从C板底面穿出。

2.导线预留一定的长度，剪掉多余的导线。

Combine Battery box and C board

1. welding battery case
2. use screws and nuts to fix battery case

电池盒与C板组合



1. 焊接电池盒导线 (有方向)
2. 用螺丝和螺母固定电池盒

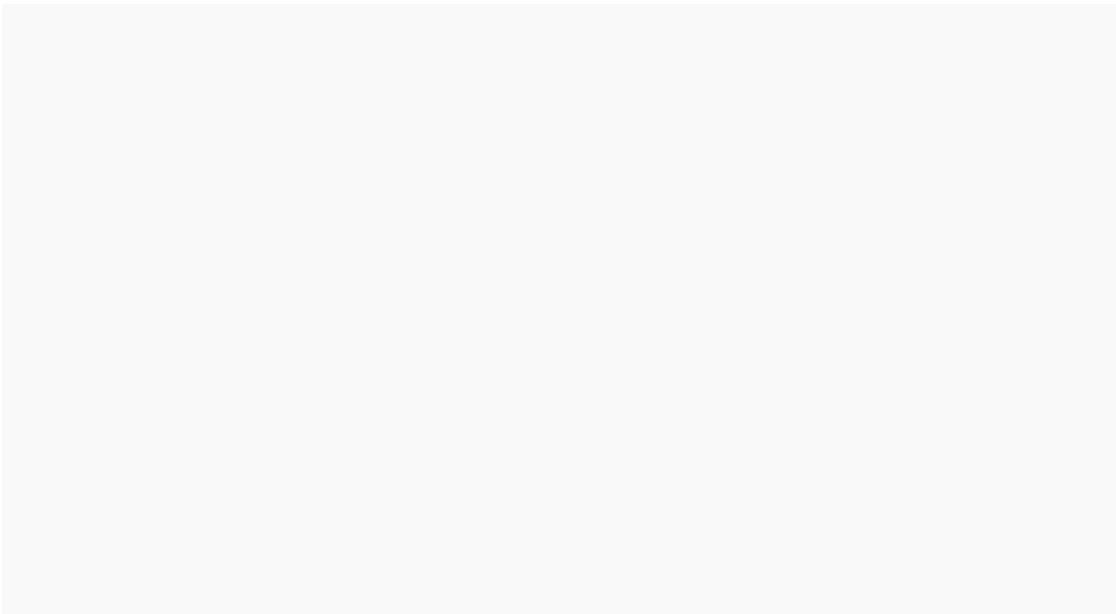
15. A.B board and C board combination (in a direction, the orientation of the arrow and the polarity of the power supply should be consistent).



16. Welding the top LED (follow direction)



All completed, the effect of CTR-30 is as follows:



CTR-30C finished products are as follows:



CTR-30 interface and key indicator diagram

