

ICSTATION 4X4X4 Welding guide light cube suite

一 The component List



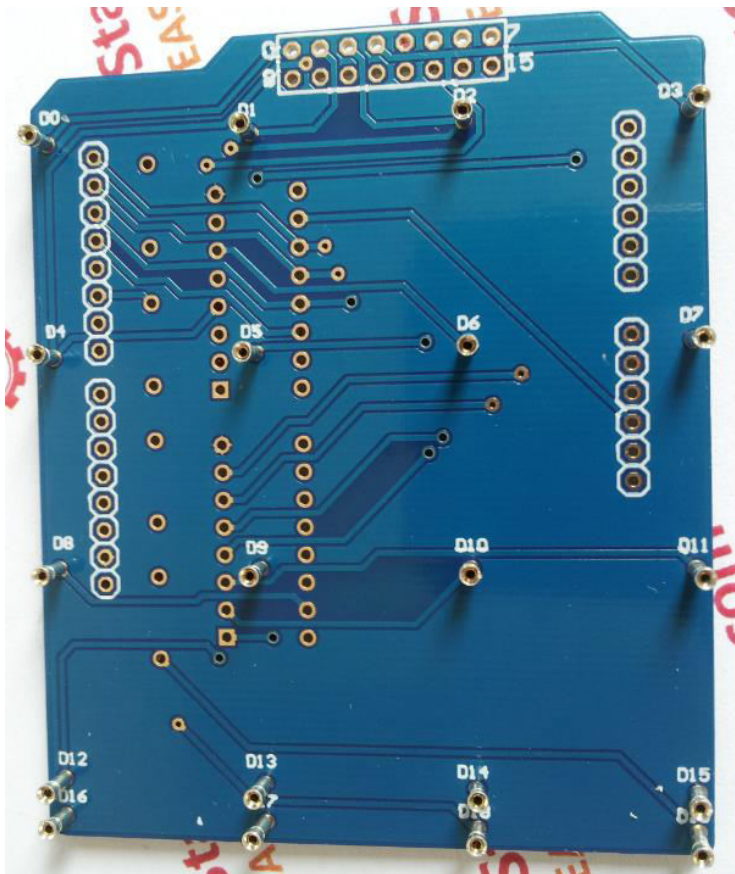
1. PCB
2. Two of 16P IC seat
3. Two of 74HC595
4. six of 500R resistance
5. A 40 p fillet mother
6. A 40 p row needles
7. Seventy of 5 mm flat LED

二. Make the rounded row needles

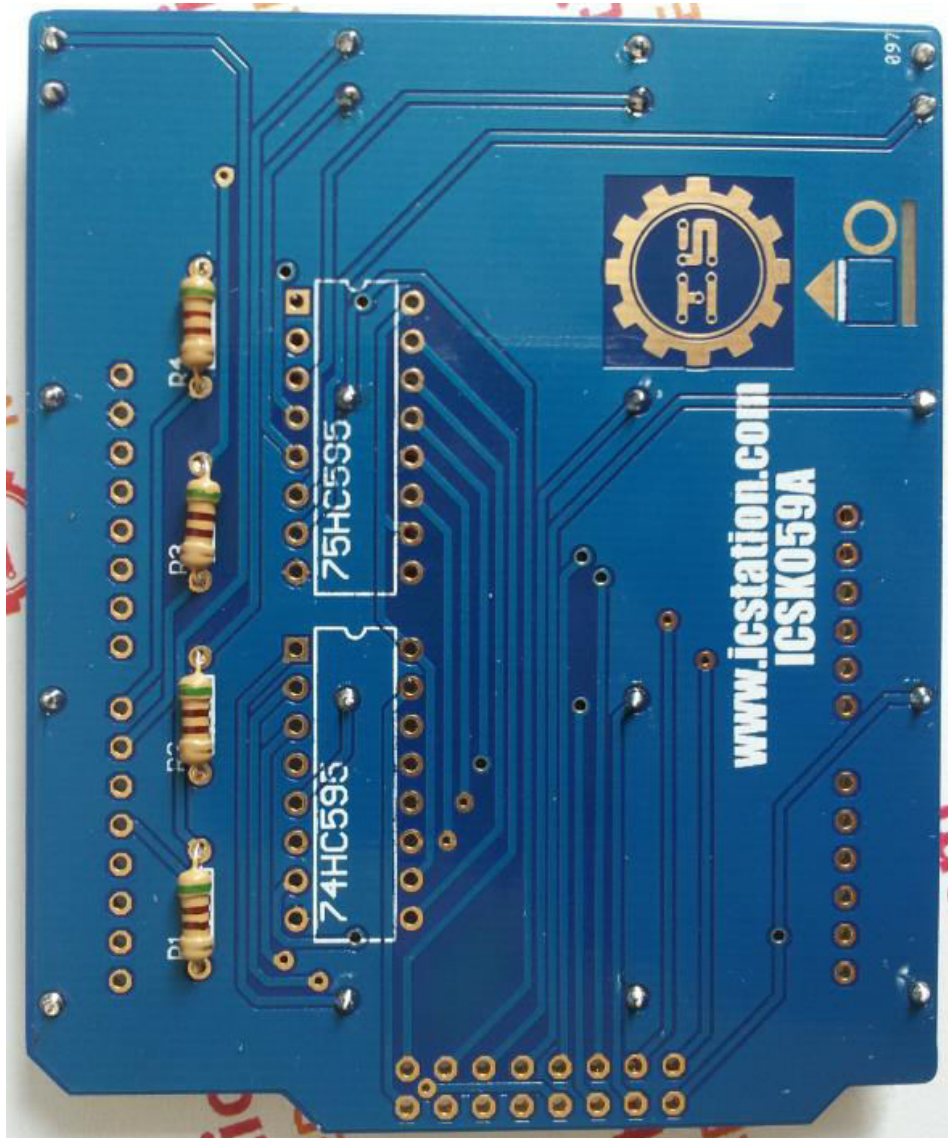
Rounded corners from the suite separate row needles with diagonal cutting pliers and remove the black plastic, as shown in figure



Will be rounded corners front row needles welded to the PCB, as shown in figure

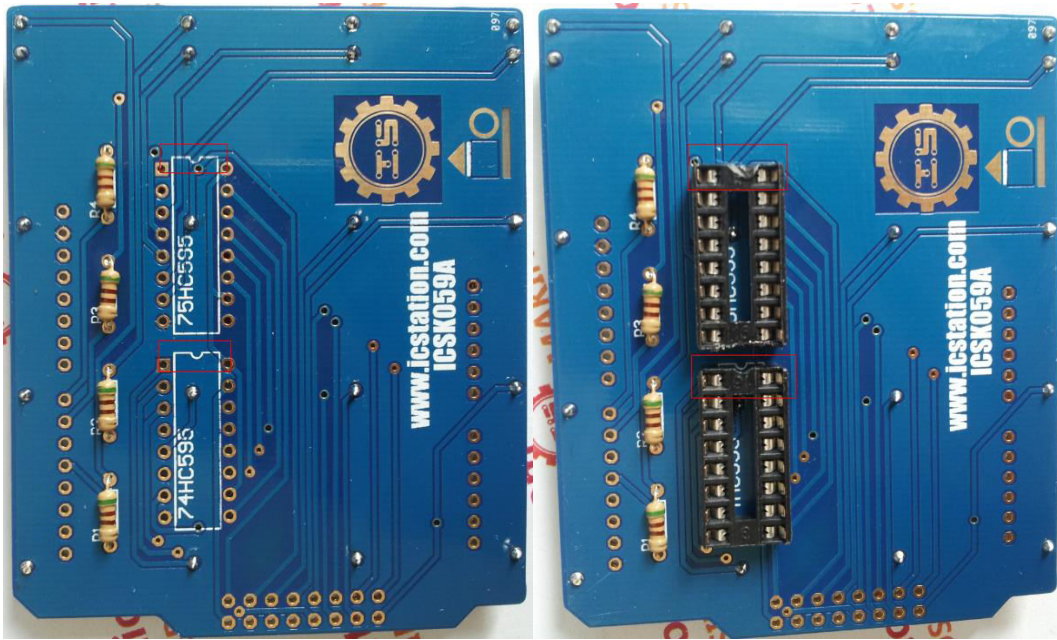


Resistance welding on the back of the four euro 500, as shown in figure

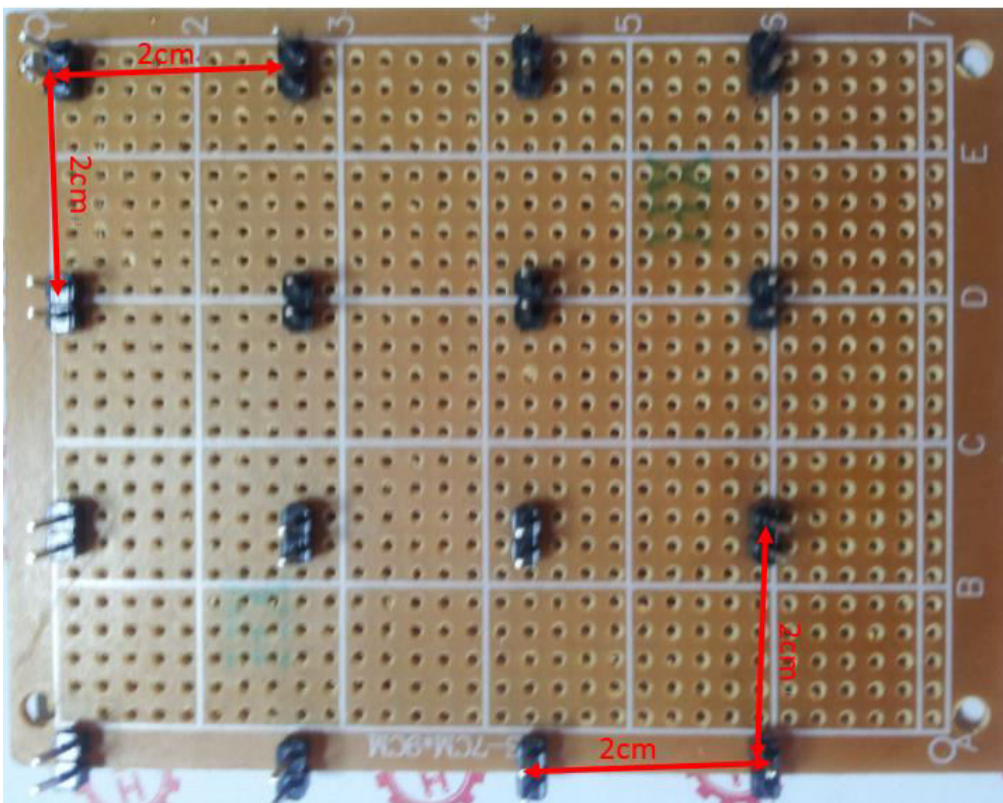


Welding two 16 p IC

Note: IC welding has direction, IC on the gap of the corresponding to the direction of the gap on the PCB, as shown in figure

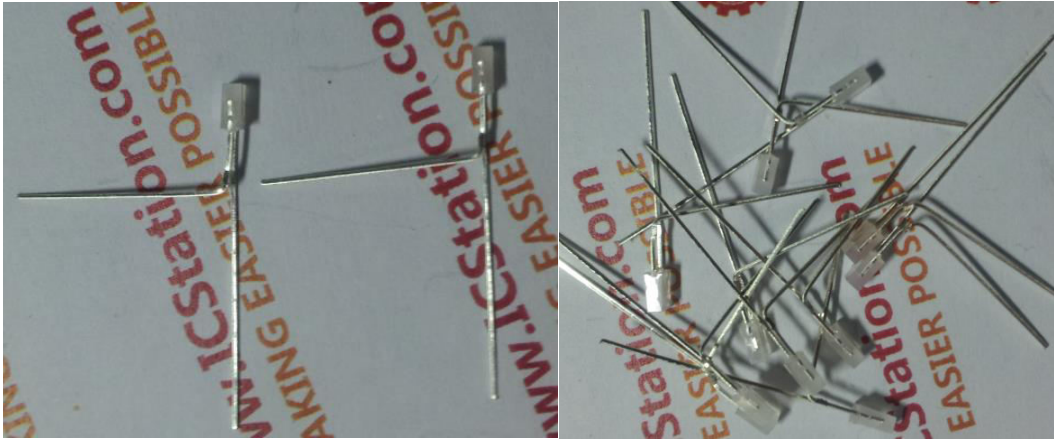


Production welding frame, as shown in figure

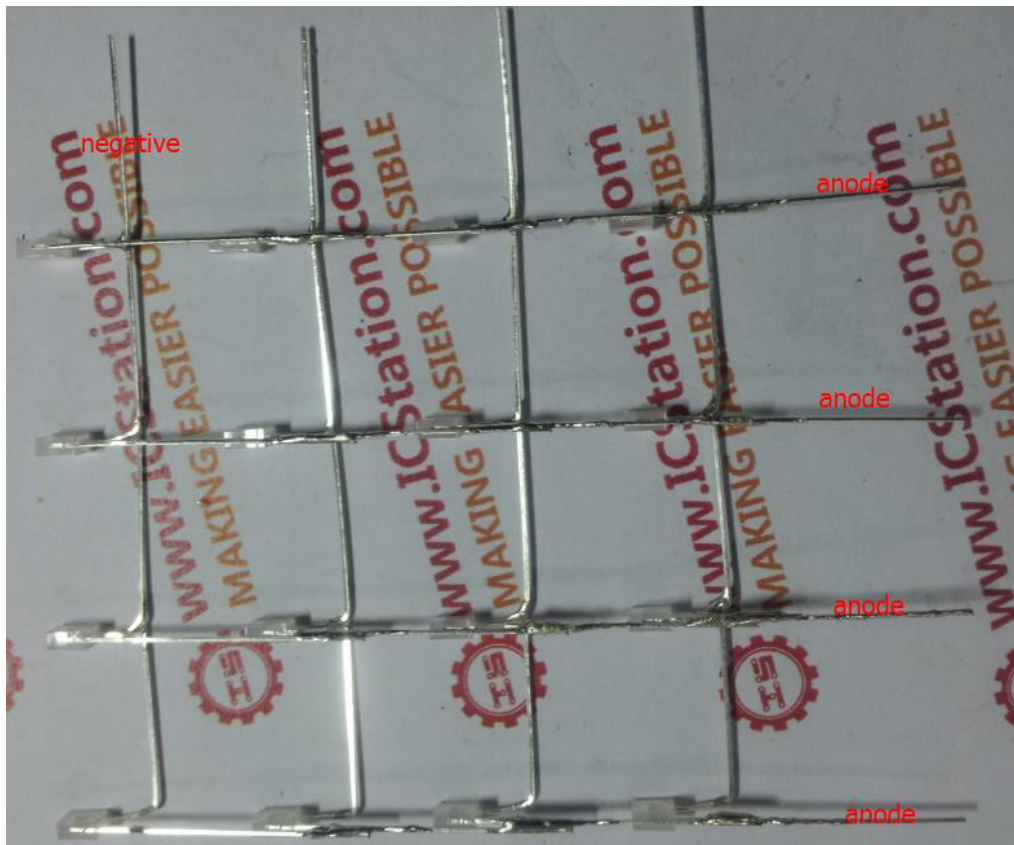


Will LED the anode (longer pins) next to the LED the cathode (shorter pin) next, rotating anode, LED to 90 degrees. As

shown in figure

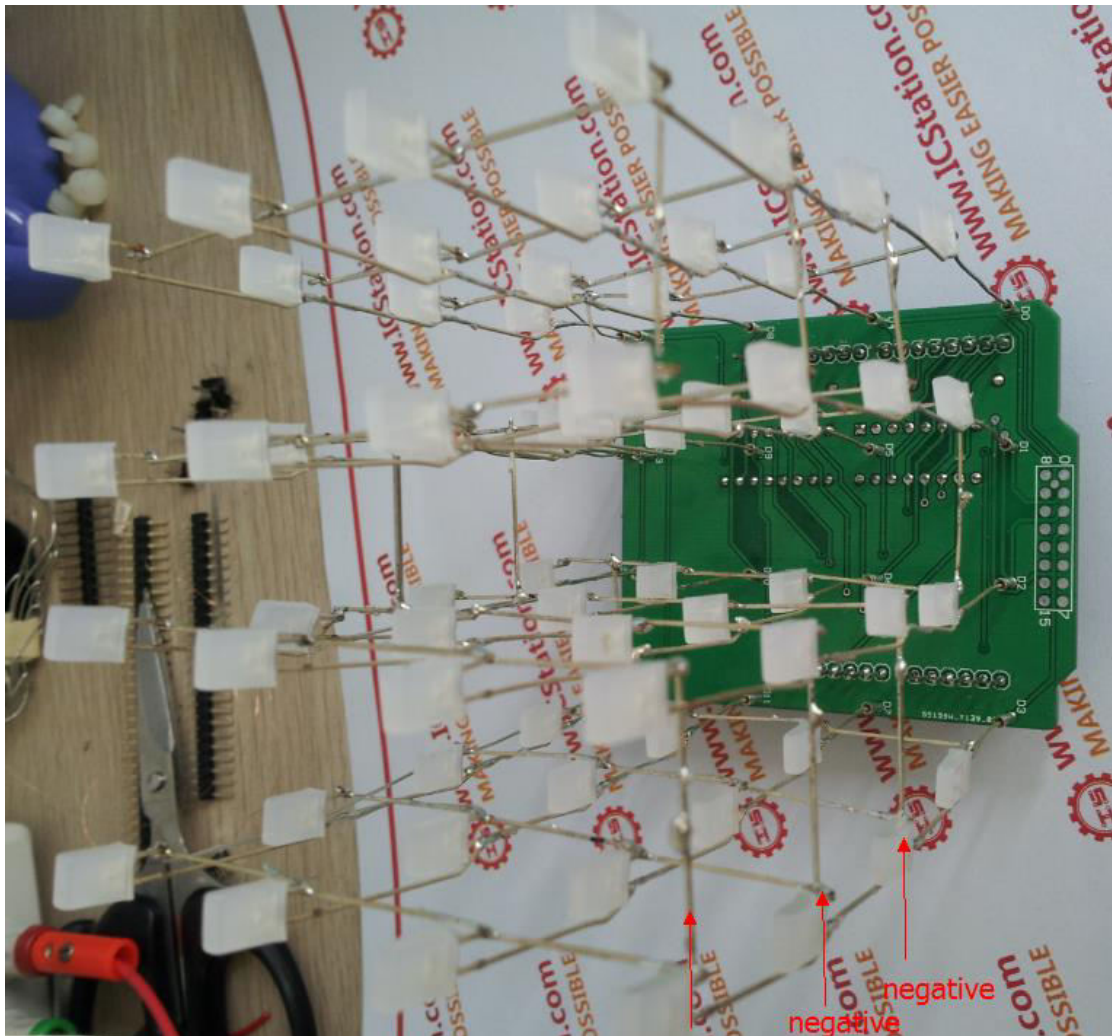


Use of welding, welding 4 surface LED four LED (4 x4 LED), as shown figure

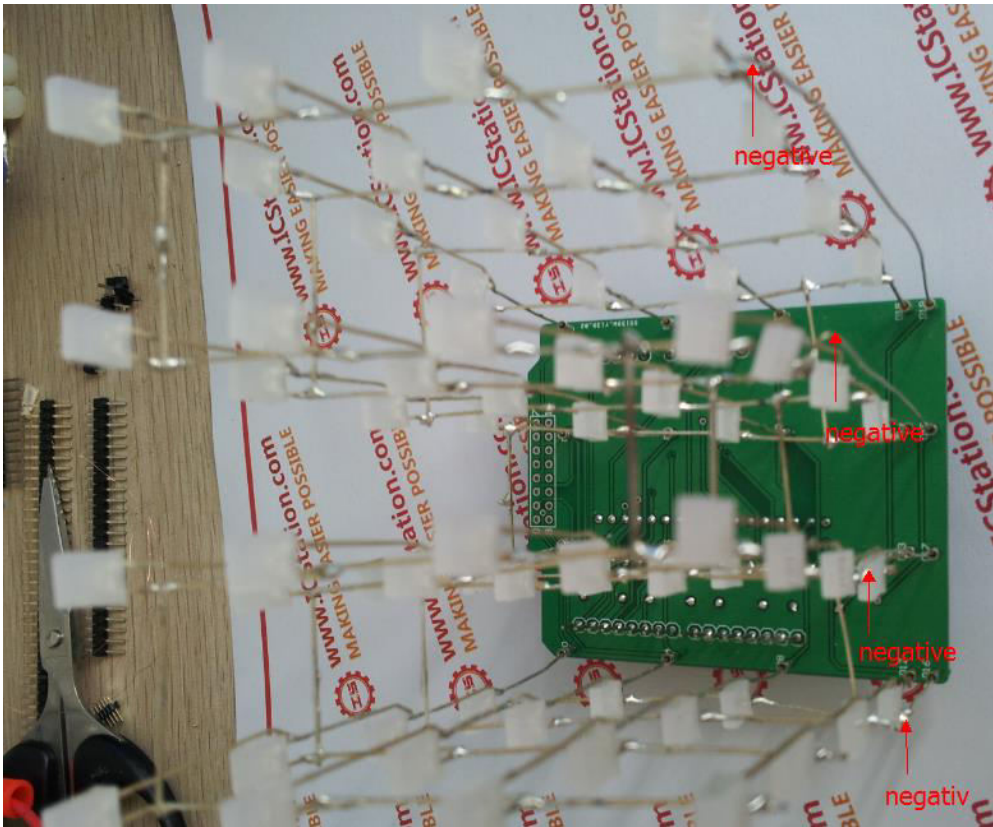


Put the LED of the anode D0 ~ D15 round needle, each layer of

LED anode with 2 cm row needle welded together, as shown in figure



The LED anode with each layer of enameled wire, connect D16 ~ D19, as shown in figure



The overall effect as shown in figure

